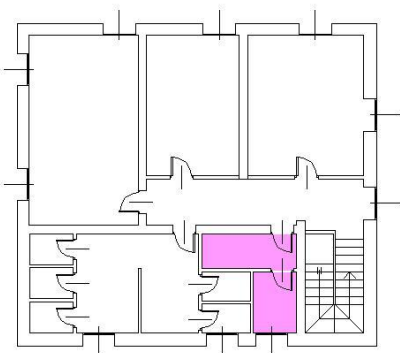
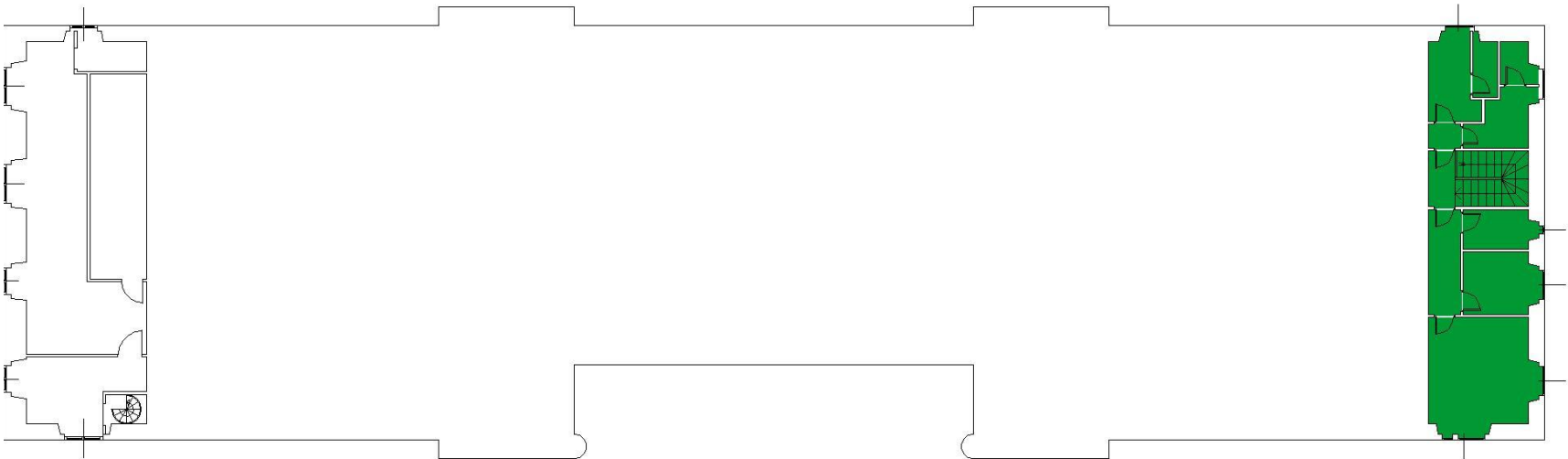













							TOTALE		Occupato		Libero		
		TOTALE		Occupato		Libero		Biglietterie Self Service		Tot. N°		Tot. N°	
										N° 10		N° 8	
										N° 2		N° 2	
Rail - Biglietteria		Sup. Tot. m² 42		m² 42		m² 0		Desk mobili		Tot. N° 1		N° 1	
Rail - Assistenza/Accoglienza		Sup. Tot. m² 0		m² 0		m² 0				N° 0		N° 0	
Retail		Sup. Tot. m² 187		m² 162		m² 26				Sale d'attesa tradizionali/Sedute a libero accesso			



							TOTALE		Occupato			Libero							
		TOTALE		Occupato		Libero		Biglietterie Self Service		Tot. N°	0	N°	0		N°	0			
Rail - Biglietteria		Sup. Tot. m²	7	m²	7		m²	0		Desk mobili		Tot. N°	0	N°	0		N°	0	
Rail - Assistenza/Accoglienza		Sup. Tot. m²	0	m²	0		m²	0		  Aree funzionali di pari ed adeguata visibilità ed accessibilità per i viaggiatori									
Retail		Sup. Tot. m²	55	m²	55		m²	0		 Sale d'attesa tradizionali/Sedute a libero accesso									

Pordenone

Scadenza contratti di locazione

	BSS e validatrici	Desk	Biglietterie Tradizionali	Locali di Assistenza/ Accoglienza
I.F. 1	12/12/2026	-	08/12/2026	-
I.F. 2	10/12/2033	-	-	-

Numero treni passeggeri

	N. treni/g in Partenza	N. treni/g in Arrivo	N. treni/g in Transito
Pordenone	0	0	81